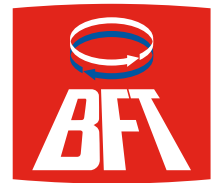


# ICARO MA

ELECTROMECHANICAL AUTOMATION FOR RACK SLIDING GATES



Opens the future



• **SMART TECHNOLOGY.**

- Incorporated two-channel rolling code radio receiver ready for connecting a second receiver.
- Control unit with self-learning and self-diagnostic functions of the parameters: brake, torque, antisquashing.
- Control unit compatible with the EELink protocol.

• **SAFE USE.**

- Thanks to the antisquashing system, the

operator inverts motion and prevents damage to people and property in the event of contact.

• **SIMPLER INSTALLATION.**

- Incorporated control unit positioned frontally for easier accessibility.
- Control unit with programming by LCD display.

| CODE          | DESCRIPTION | VOLTAGE | LEAF WEIGHT              |
|---------------|-------------|---------|--------------------------|
| P925180 00006 | ICARO MA    | 230 V   | up to 20000 N (~2000 Kg) |

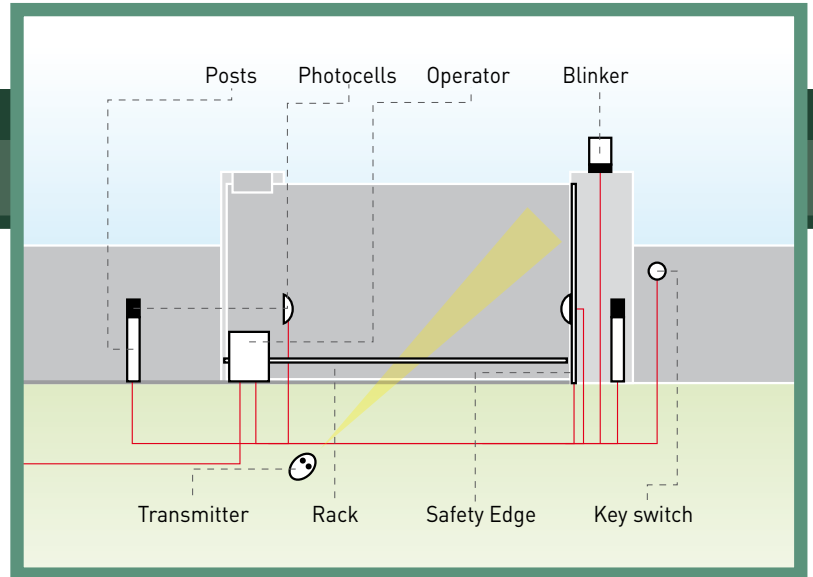
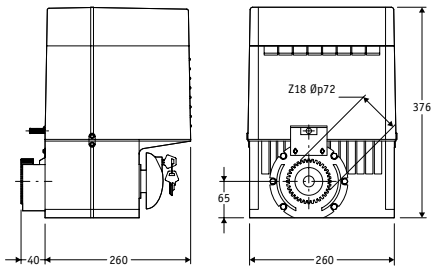
## TECHNICAL FEATURES

### ICARO MA

|                                  |                                  |
|----------------------------------|----------------------------------|
| CONTROL PANEL                    | LEO D MA (incorporated)          |
| REVERSIBLE/IRREVERSIBLE OPERATOR | irreversible                     |
| POWER SUPPLY                     | 230 V- ± 10%, 50 Hz single-phase |
| ABSORBED POWER                   | 750 W                            |
| THERMAL PROTECTION               | integrated                       |
| LEAF SPEED                       | 9 m/min                          |
| OUTPUT REVOLUTIONS               | 37 min                           |
| PINION PITCH                     | 4 (18 teeth)                     |
| IMPACT REACTION                  | electronic clutch with encoder   |
| TYPE OF LIMIT SWITCHES           | electromechanical or inductive   |
| MANUAL RELEASE                   | mechanical release with knob     |
| OPERATING CYCLE                  | very intensive use               |
| ENVIRONMENTAL CONDITIONS         | from -15°C to +60°C              |
| DEGREE OF PROTECTION             | IP24                             |
| OPERATOR WEIGHT                  | 250 N (~25 kg)                   |
| DIMENSIONS                       | see drawing                      |



DIMENSIONS



ACCESSORIES



**P111376 - SCS 1**  
Serial connection board for QSC D MA, LIBRA C MA, LIBRA C MV, LIBRA C LX, VENERE D, LEO D MA, LEO MV, RIGEL 5 and ALTAIR P.

**NEW 2003**



**P111408 - SCS WIE**  
Circuit board for direct connection of wiegand accessories (such as SELETTO, COMPAS SLIM, etc) to the control units QSC D MA, LIBRA C MA, LIBRA C MV, LIBRA C LX, VENERE D, LEO D MA, LEO MV, RIGEL 5 and ALTAIR P.



**D571054 - CFZ**  
22x22 4-pitch galvanised steel rack. 2 m lengths in 10 m packs.



**D571053 - CVZ**  
30x12 4-pitch drilled galvanised steel rack with support. 1 m lengths in 10 m packs.



**N999320 - CVZ-S**  
30x8 4-pitch drilled galvanised steel rack with support. 1 m lengths in 10 m packs.



**N190039 - CSP 10**  
Shock absorber profile, length 1000 mm.



**N190040 - CSP 20**  
Shock absorber profile, length 2000 mm.



**N190041 - CSP 25**  
Shock absorber profile, length 2500 mm.



**N999156 - SFI**  
Fixing system pack.



**D531548 - KI**  
Release key blank for ICARO, URANO BT, IGEA, IGEA BT.